



CONTENTS

Vision	5
About us	6
Company Structure	7
Fields of Activities	8
Quality / Health & Safety / Environment	10
Human Resources	11
Financial Data	12
References in Nigeria / Africa	13
References Worldwide	18
Key Projects	21
Contacts	36

VISION

VISION

To be a leading engineering and construction company.

MISSION AND VALUES

Basic principles for the realization of engineering services are:

- We make plans for the future of our company and implement them in accordance with sustainable development principles, promoting these principles to our clients and partners in Nigeria and throughout Africa.
- We respect our clients and partners, employees, our shareholders and community as well as the environment we work in.
- We apply the latest technologies and know-how, we continually improve and innovate our work process. We strive to achieve quality in the best possible way.
- Accidents prevention and care for health & safety is our priority.
- We are committed to protection of the environment in all aspects and to continual improvement in environmental protection.
- We respect legal requirements and strive to contribute to poverty alleviation and general community development.
- We encourage teamwork, openness and confidence and we value the knowledge based on diversity of background, experience and opinion.

ENERGO NIGERIA Ltd.



Dejan Jerotić, dipl.Ing.
Executive Vice Chairman / CEO

ABOUT US

Energio-Nigeria Ltd. is a private, engineering & contracting company founded in 1990.

Years of experience has taught us to be fast and agile, keen and smart to take chances and stand for what we believe in - **Create value for all our stakeholders.**

Responding to the needs of electric-power providers, industries, Government and Public authorities in Nigeria and worldwide, we are offering numerous services including:

- | | |
|---------------------------|--------------------------------|
| • feasibility studies | construction |
| • project planning | supervision |
| • project management | inspection & commissioning |
| • contract administration | maintenance and other |
| • construction management | post construction services |
| • design | training of clients' personnel |
| • Feasibility studies | Supervision |
| • Project Planning | Engineering |
| • Project Management | Procurement |
| • Contract Administration | Inspection and Commissioning |
| • Construction Management | Maintenance and other |
| • Design | Post Contract Services |
| • Construction | Training of Clients' personnel |

Our fields of expertise are:

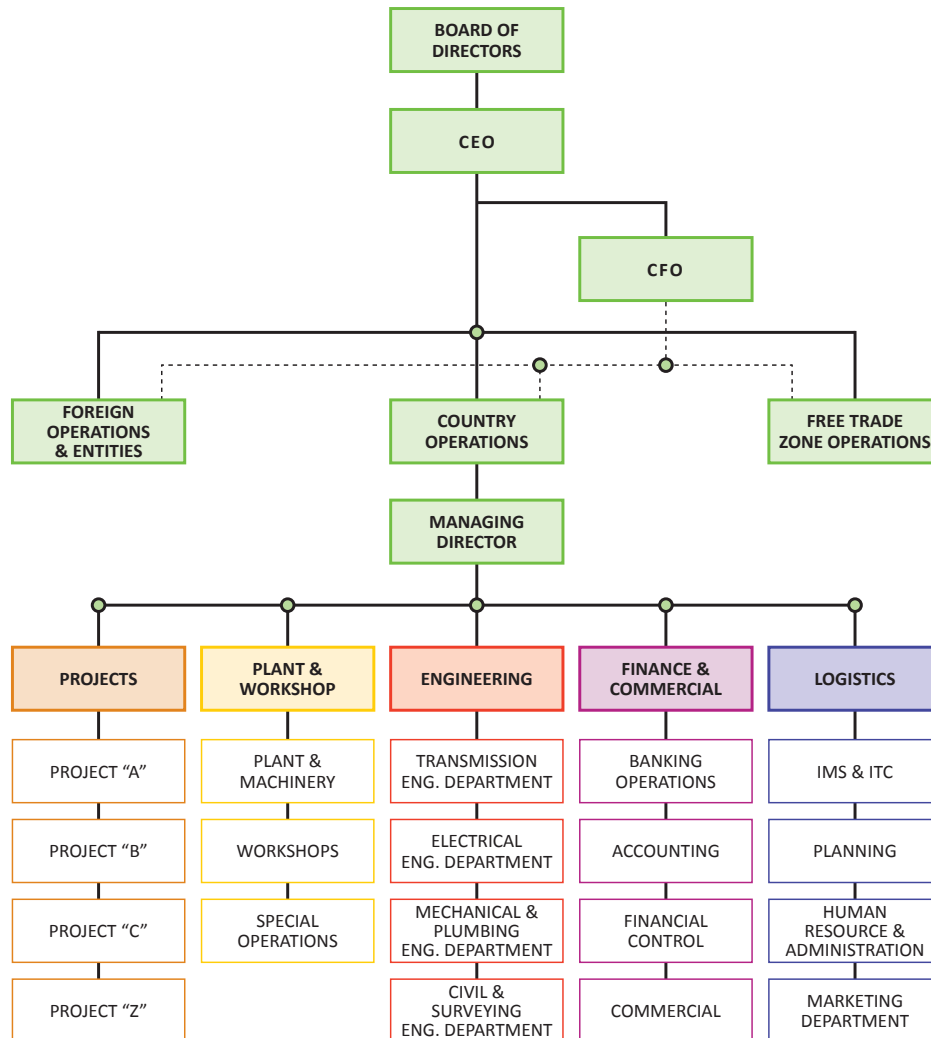
- Power Generation, Transmission and Distribution,
- Water Treatment,
- Building Services – (MEP) and
- Buildings' Construction

Our project managers, along with skilled personnel are involved in every stage of a project and are always available to our customers. We believe in constant coordination and communication with our clients. It makes us understand them better, see their needs clearer and enable us to serve them better and create more value. This, together with constant improvement of the Company organization, staff knowledge and skills are the basis for obtaining the best results in our projects.

Decades of existence on the Nigerian and world market, long lasting partnership with our clients and business partners are the best proof of remarkable performance and ability to act quickly and adequately on all projects.

YOUR ACQUAINTANCE AND PARTNER IN NIGERIA AND WORLDWIDE

COMPANY STRUCTURE



BOARD OF DIRECTORS

- General Abdulsalami A. Abubakar, GCFR
Chairman
- Engr. Pavle Tomašević
Vice Chairman
- Engr. Alhaji Hamza Ibrahim
Director
- Engr. David Oyeyele
Director
- Engr. Felix O. Ashenuga
Director
- Engr. Alhaji Mustapha Abdulkadir
Director
- Engr. Jovan Šerbanović
Director
- Engr. Predrag Aleksić
Director
- Engr. Dejan Jerotić
Executive Vice Chairman/CEO

FIELDS OF ACTIVITIES

POWER

Efficient and safe generation, transmission and delivery of valuable electrical energy to its final destination are demanding, undertaking and permanent challenge for us. We have constructed thousands of kilometers of transmission and distribution lines numerous generation plants, distribution substations and transformer station.

Services we offer are:

- Implementation of energy system models, production cost models and generation/transmission expansion models
- Integrated energy analyses, energy and power planning studies
- Analyses of hydroelectric, thermal and nuclear power plants integration in power systems
- Power - electricity investment optimization
- Generation and transmission reliability analyses within the power system
- Rationalization of the use of energy
- New and renewable energy resources' analyses
- Ecological aspects' investigations of all energy facilities operations
- Energy information systems
- Transfer of knowledge and skills related to the energy and power system planning in Nigeria

For us, every project is a new challenge. The goal though, remains the same: To achieve the best results.

PROTECTION & CONTROL

Dedicated to quality, on Client's satisfaction, our highly experienced professionals are orientated to meet your project development needs and make control and protection systems that will suite you best.

In cooperation with the world best manufacturers of control and protection equipment, Energo provides and implements latest technical solutions and achievements in this area.

Protection and control for generation, transmission and distribution system projects; SCADA implementation; automation implementation in industrial utilities projects; Building Management Systems for commercial, public, high-tech residential building projects and protection and control for mechanical, electrical and technology applications are among the services that Energo has already provided, with significant results.

MEP - BUILDING SERVICES

Energo is providing MEP - mechanical electrical and plumbing services for various types of buildings: sport, shopping, congress and business centers, hotels, theaters, hospitals, health resorts, office, residential and industrial buildings.

We can meet all required needs for: HV and LV supply systems, HV and LV equipment, power installations, lighting, lightning, transportation systems (elevators, escalators); communication and information systems; security systems; voting, simultaneous interpreting, conference and other special purposes systems; BMS (building management systems) EMCS (electrical monitoring and control systems), HVAC systems, fire-protection systems; water treatments, indoor and outdoor water supply, sewage systems; drainage and irrigation systems, medical and industrial gas piping systems etc.

We guarantee quick and successful completion of all your demands

WATER TREATMENT

Water is vital to life and one of nature's most valuable resources. Since there is neither a way of reproducing water, nor is there any substitute to it, we must treat it with greatest care and consideration.

Energo is engaged in many projects of underground and surface water treatments. In the past two decades of our business activities we have executed numerous projects for the construction of both potable and waste water treatment plants including municipal, pre-treated and industrial ones.

Our know-how and experience enable us to apply the most adequate treatment methods and obtain results in conformity with quality standards.

Services we offer are: feasibility studies, design, equipment procurement, construction, supervision, commissioning, maintenance, post-construction services and personnel training.

BUILDINGS' CONSTRUCTION

New technical demands, various climate and social conditions, historical, cultural and architectural heritage are challenges that are inspiring and motivating our designers and constructors.

Our teams of architects and civil engineers are offering best solutions, contemporary design and implementation of modern building materials for various types of buildings – private family villas, apartment and administrative buildings in Nigeria as well as in other African and worldwide countries.

Our prerogative is to provide our clients with modern, useful, comfortable and recognizable space, implementing our professional experience and know-how both in design and construction, using latest construction technologies and building materials.

QUALITY / HEALTH & SAFETY / ENVIRONMENTAL PROTECTION



Energio-Nigeria strictly implements and follows standards of Integrated Management System:

- ISO 9001 (Quality Management)
- ISO 14001 (Environmental Management)
- OHSAS 18001 (Health and Safety Management)

Quality planning, assurance and control on projects are based on international practice. Supplier quality management is important part of our project realization. Thanks to Quality Management we ensure that every project is responsibly executed from start to end.

Our goal is to protect environment, starting from project planning through designing, constructing up to the project completion and its exploitation. Our activities have minimal impact on the environment in every stage of project realization.

Energio Nigeria Ltd. believes that all accidents and injuries at work can be prevented. Identification of risks before project start and implementation of Health and Safety plan are basics of our every day activities.

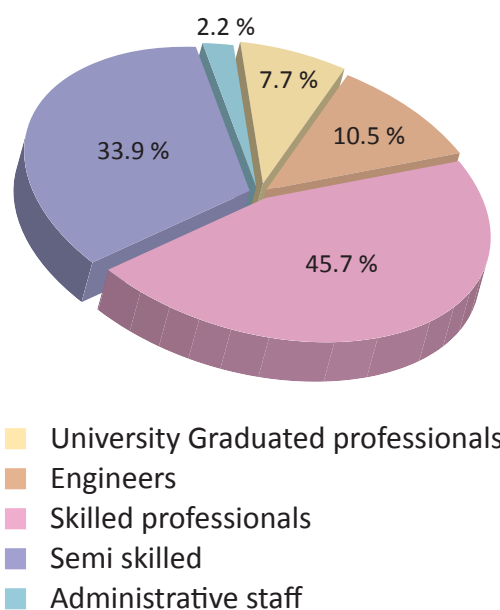
HUMAN RESOURCES

From the very start, Energo Nigeria employs experts and skilled professionals for all the fields of activities we are engaged in.

Our trained project managers and registered professionals - Electrical, Mechanical, Civil Engineers and Technicians, Architects, Economists and other skilled personnel with long and proved experience are always at Customer availability with suggestions and solutions for any particular problem.

PERSONNEL IN NIGERIA

1	Electrical Engineers	14
2	Mechanical Engineers	6
3	Civil Engineers	6
4	Process & Planning Engineers	2
5	QEM Engineers	2
6	Economists	5
7	Specialist Electrician	14
8	Specialist Mechanic	8
9	Specialist Civil	8
10	Specialist Erector	18
11	Electrician	22
12	Mechanic	12
13	Auto Electrician	3
14	A/C Mechanic	5
15	Locksmith	16
16	Vulcanizers	4
17	Fitters	18
18	Operators – heavy machines	22
19	Drivers	62
20	Iron benders	28
21	Carpenters	16
22	Semi skilled	154
23	Administrative staff	10
TOTAL		455



Professionals we employ have the right blend of talent and competencies such as knowledge, skills, team-based attitudes, flexibility, versatility and leadership. Constant and continuous knowledge improvement through on-going training programs is our competitive advantage and a key to our success in an ever growing market competition.

Our employees are our competitive advantage. They are a key to our success.

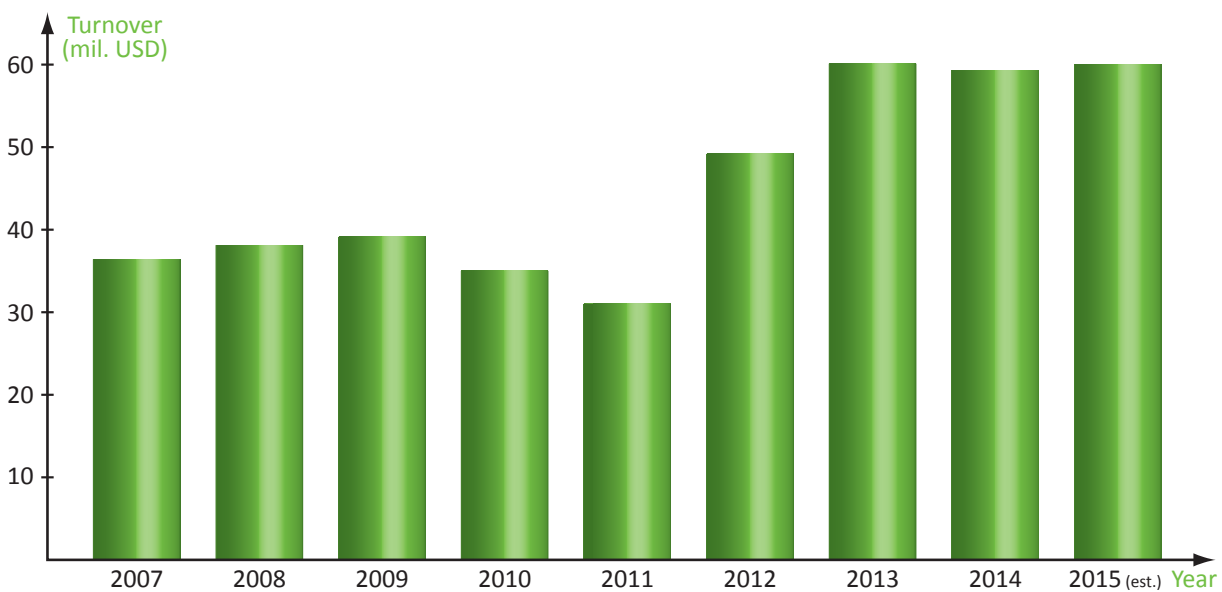
FINANCIAL DATA



Financial results in the past eight years reflect our activities on the Nigerian market. We have maintained our strong position on the power generation, transmission and distribution market, achieved planned financial results and steady growth, diversified our activities and improved financial strength and stability.

Turnover (mil. USD)

2007	2008	2009	2010	2011	2012	2013	2014	2015 (est.)
36.411	38.134	39.125	35.012	31.006	49.176	60.111	59.325	60.000



REFERENCES IN NIGERIA / AFRICA

Projects	Client	Contract Value (USD)	Year of Completion	Project Description
Construction of transformer substation 2x10MVA, 110/30kV, Gabiro, Rwanda	Energy Development Corporation Limited (EDCL)	7,147,000	on going	Plant design, supply erection and commissioning
Construction of transformer substation 1x10MVA, 110/30kV, Ntendezi and extension of Bugarama transformer substation, Rwanda	Energy Development Corporation Limited (EDCL)	5,949,878	on going	Plant design, supply and installation
Construction of Multi-modal facility, Free trade Zone Calabar, Nigeria	General Electric / Julius Berger FZE	29,772,485	on going	Turn Key
National Assembly Residence Complex (ANR – Abuja) – Abuja, Nigeria	Julius Berger Plc / Federal Government of Nigeria	18,350,000	on going	Turn Key Project – Engineering, Procurement, Construction and Commissioning of all infrastructure, EMP, Audio/Visual, Security, BMS systems on the project
National Assembly Institute for Legislative Studies Complex (ANI – Abuja) – Abuja, Nigeria	Julius Berger Plc / Federal Government of Nigeria	18,300,000	on going	Turn Key Project – Engineering, Procurement, Construction and Commissioning of all Mechanical, plumbing, fire fighting and MCC systems on the project
Private Villa & compound, Nigeria	Rodnab Construction Ltd / Private Investor	9,750,000	on going	Turn Key Project – Engineering, Procurement, Construction and Commissioning of all infrastructure, EMP, Audio/Visual, Security, BMS systems and power and water supply
Construction of Transformer Substation 1 x 150 MVA & 1 x 60 MVA 330/132/33, Ihiala, Nigeria	NDPHC/Federal Ministry of Power & Steel	9,400,000	on going	EPC project –Design, partial supply, construction & commissioning of 1 x 150MVA 330/132kV and 1 x 60MVA 132/33kV substation
132kV Double circuit Over Head Transmission Line Elelenw -Rukpokwu Port Harcourt, Rivers State, Nigeria	Talaveras Group of Companies	3,900,000	on going	Turn key EPC project –Design, supply, construction & commissioning of 18 km of DC Transmission Line
Construction of 132kV SC Transmission Line and 132/33/3.3 KV Substation at “Tarkwa” Island – Lagos for Atlas Cove Oil Depot - NNPC	Nigerian National Petroleum Corporation (NNPC)	11,500,000	on going	Turn key EPC project –Design, supply, construction & commissioning of 20km of 132kV SC Transmission Line & 1x15MVA & 2x7.5MVA, 132/33/3.3kV Substation
Construction of 330 kV, DC Transmission Line (160 km), Erukan-Omotosho	Transmission Company of Nigeria (TCN)	33,000,000	on going	Turn key EPC project –Design, supply, construction & commissioning of 330kV DC Over Head Transmission Line – 160km
Embassy of the Republic of Serbia, Abuja, Nigeria	Ministry of Foreign Affairs of the Republic of Serbia	4,170,314	2015	Turn key project –Design, supply, construction & commissioning
Construction of Transformer Substation 1 x 150 MVA & 1 x 60MVA, 330/132/33 (extension), Ugwaji, Nigeria	NDPHC/Federal Ministry of Power & Steel	11,500,000	2015	Turn key EPC project –Design, supply, construction & commissioning of 1 x 150MVA 330/132kV and 1 x 60MVA 132/33kV substation
Rehabilitation of collapsed 330kV Sapele – Aladja Transmission Line	Transmission Company of Nigeria (TCN)	1,440,000	2015	Removal of collapsed towers and material, procurement & supply of new towers and additional stringing material, construction & commissioning of rehabilitated OHTL
Construction of 132 kV Transmission Line – Gurara-Kudenda, Nigeria	Salini Nigeria Ltd/ Federal Ministry of Water Resources	12,445,359	2015	Turn key EPC project –Design, supply, construction & commissioning of 80 km of 132kV Transmission Line
Embassy of The Republic of Serbia in Abuja, Nigeria	Energoprojekt/ Government of the Republic of Serbia	4,700,000	2015	Turn key EPC project –Design, supply, construction & commissioning
Construction of 132kV, DC, Transmission Line: Underground HV Cable / OHTL Katampe -National Stadium, Abuja	Transmission Company of Nigeria (TCN)	13,980,000	2015	Turn key EPC project – Engineering, supply, construction & commissioning of 132kV DC combine Cable/OHTL connection - 12 km
Construction of two 330kV, DC, (2x162 + 9 km) Transmission Lines, Ugwuaji - Ikot Ekpene	Niger Delta Power Holding Company (NDPHC/NIPP)	91,110,000	2015	Turn key EPC project –design, supply, construction and commissioning of 330kV DC Transmission Lines, (2 x 162 km) Ugwuaji - Ikot Ekpene



Projects	Client	Contract Value (USD)	Year of Completion	Project Description
UYO Stadium	Julius Berger PLC / Akwa Ibom State Government	18,300,000	2014	Turn Key Project – Engineering, Procurement, Construction and Commissioning of all EMP, Audio/Visual, Security, BMS systems and power and water supply
330kV Substation (switchgear yard), Ugwuaji and 330kV OHTL New Haven - Ugwuaji, Enugu, Nigeria	NDPHC / Federal Ministry of Power and Steel	25,053,368	2014	Turn key EPC project –Design, supply, construction & commissioning of 330kV Substation and 330kV DC OHTL - Ugwuaji
Twin Lakes Real Estate Development Phase 2, Lagos	Julius Berger Plc / Chevron	6,250,000	2013	Construction of various facilities for 12,000 residents (diesel-generator station, water treatment plants (potable and waste water, telecommunication systems etc.)
330kV Substation at Gas Turbine Power Plant – GEREGU II Geregu, Lokoja, Kogi State, Nigeria	Siemens Limited (Nigeria)	1,100,000	2013	Erection, Installation & Commissioning of 330KV Substation at Gas Turbine Power Plant
132kV Double circuit Over Head Transmission Line Afam – Trans Amadi Afam, Rivers State, Nigeria	Talaveras Group of Companies	5,200,000	2013	Turn key EPC project –Design, supply, construction & commissioning of 24 km of DC Transmission Line
Governors Lodge Uyo - Phase III, Uyo, Akwa Ibom State	Julius Berger PLC / Akwa Ibom State Government	2,580,000	2013	Design, supply, installation, testing and commissioning for Electrical, Mechanical, Fire-fighting and Plumbing systems (equipment, materials and services)
Construction of Transformer Substation Oke-Aro „ERUKAN“, 2x300MVA, 330/132kV and 2x60MVA, 132/33kV, Lagos State	NDPHC/Federal Ministry of Power & Steel	30,777,370	2013	Turn key EPC project – engineering, procurement and construction of 2x300 MVA 330/132kV and 2x60 MVA 132/33kV SG with turn in & out
Dualization of street lighting of Abuja-Gwagwalada High-way	Julius Berger PLC /Federal Capital Development Authority (FCDA)	7,540,000	2012/2013	33kv /0.415kv compact substations, underground cables and street lighting along 44km airport road Abuja - Gwagwalada
Street Lighting – New Lekki - Ikoyi Bridge - Lagos	Julius Berger Plc / Lagos State Government	980,000	2012	Street and decorative Bridge Lighting
Twin Lakes Real Estate Development Phase 1A, Lagos	Julius Berger Plc / Chevron	11,590,000	2012	Construction of various facilities for 12,000 residents (diesel-generator station, water treatment plants (potable and waste water, telecommunication systems etc.)
Governors Lodge Uyo, Phase II, Akwa Ibom State	Julius Berger PLC / Akwa Ibom State Government	11,820,000	2012	Design, supply, installation, testing and commissioning for Electrical, Mechanical, Fire-fighting and Plumbing systems (equipment, materials and services)
Construction of 132KV DC Transmission Line,(80km) Jos – Kafanchan	PHCN	10,160,000	2012	Turn key EPC project – engineering, procurement and construction of 132kV DC Transmission Line
Reconstructions and relocations of Distribution and Transmission Lines, 33kV & 132KV in Abuja	Salini Nigeria Ltd/ Julius Berger Plc / CCECC	1,020,000	2012	Various reconstruction and diversions due to construction of roads and railways
Reconstructions of Transmission Lines, 132KV DC in Lagos	CCECC/LAMATA	1,480,000	2011	Various reconstruction and diversions due to construction of railway in Lagos
Transmission Line 132 kV, D/C, 26km, Afam – Port Harcourt	Talaveras Group / Sypem/ Rivers State Government	6,970,000	2011	Turn key EPC project –Design, supply, construction & commissioning of 132kV DC Over Head Transmission Line Afam - Eleme (Port Harcourt)
National Assembly Complex Phase III, Part 2, Abuja	Julius Berger PLC / Federal Government	6,902,000	2011	Design, supply, installation, testing and commissioning for Mechanical (sanitary and HVAC) and Fire-fighting systems (equipment, materials and services)

Projects	Client	Contract Value (USD)	Year of Completion	Project Description
Rehabilitation of 132kV DC Transmission Line Kaduna-Zaria	PHCN	2,300,000	2011	Rehabilitation of 80 km 132kV transmission line. First instalment of T-ACSR conductor in Nigeria.
Relocation of Distribution Line, 33KV DC, 44km, Apo substation – Abuja International Airport	Julius Berger PLC/ FCDA	2,000,000	2010-2011	Various reconstruction and diversions due to dualization of expressway
Governors Lodge Uyo, Phase I, Uyo, Akwa Ibom State	Julius Berger PLC / Akwa Ibom State Government	8,556,800	2009	Design, supply, installation, testing and commissioning for Electrical, Mechanical, Fire-fighting and Plumbing systems (equipment, materials and services)
Transmission Line 330 kV DC, Egbin - Ikeja West / Benin, Lagos and Extension of 330kV/132kV substation at Egbin	PHCN	9,700,000	2009	Turn key EPC project - Design, procurement, construction & commission. of 28 km DC TL and 2 additional bays in 330/132kV substation at Egbin
Distribution Line, 33KV DC, 44km, Apo substation – Abuja International Airport	NDPHC/Federal Ministry of Power & Steel	4,500,000	2008	Turn key project – construction of 33kV DC distribution line
Extension of SCADA signals from the switchyard to the control rooms at Katampe 132/33 kV substation	NEPA	350,000	2007	Turn key project
National Assembly Office Complex, Phase III, Part 1, Abuja	Julius Berger PLC / Federal Government	11,000,000	2007	Design, supply, installation, testing and commissioning for Mechanical (HVAC), Fire-fighting, Plumbing and MCC systems (equipment, materials and services)
Switchyard at Gas Turbine Power Plant at Geregu, Ajaokuta	Siemens, Nigeria / Federal Government	750,000	2006	Turn Key project - erection of switchyard 330kV at Gas Turbine Power Plant - Geregu
Transmission Line, 330 kV DC, Shiroro - Abuja	NEPA/ABB	12,450,000	2005	Erection of 144km, 330 kV DC overhead transmission line from Abuja to Shiroro
Electrification of 9 villages, Gombe state	NEPA	450,000	2005	Construction of 167km of 0.4; 10; 33kV rural electrification lines & substations
GSM Repeater Stations Kaduna - Jos Link	Globalcom / Siemens	500,000	2005	Civil works and antenna tower erection for 5 repeater stations
Power supply at Federated Steel Mills Factory, Otta, Ogun State	FSM	1,240,000	2005	Refurbishment and upgrading of 2x20MVA, 33/11kV substation, 11kV UG Cable distribution and 11kV SWGR
Housing Development at Ologun Agbeje Rd., Victoria Island, Lagos	Globalcom	4,100,000	2005	Turn Key Project – Design, procurement, erection and commissioning of 4 floor residential building with flats for GLO
Replacement of Distance Protection Relays	NEPA	3,020,000	2005	Replacement of distance protection in 11 Grid Power Plants and substations; Nigeria
Construction of 132kV DC Transmission Line; Underground HV Cable/OHTL combine connection „Katampe” – „Central Area”, Abuja	NEPA	19,190,000	2005	Design, supply, construction & commissioning of 132kV DC combine Cable/OHTL connection - 10 km
Substation „Central Area”, 2X60MVA, 132/33kV, Abuja	NEPA	15,030,000	2004	Design, supply, construction & commissioning of GIS Indoor Substations 2X60MVA, 132kV SG with double bus-bars and 1 1/2 CB\
Kwajaffa extension electrification project	NEPA	260,000	2004	Construction of 33kV rural electrification lines & substations





Projects	Client	Contract Value (USD)	Year of Completion	Project Description
Substation „Katampe“, 2X60MVA, 132/33kV, Abuja	NEPA	10,870,000	2003	Design, supply, construction & commissioning of 2X60MVA, 132kV SG with double bus-bars and 1 1/2 CBS - 33kV OHTL bays
Substation „Katampe“, 2X150MVA, 330/132kV, Abuja	NEPA	17,360,000	2003	Design, supply, construction & commissioning of 2X150MVA, 330kV SG with double bus-bars and 1 1/2 CBS
Distribution Line, 33 kV DC line, Otta - FSM, Lagos	NEPA	730,000	2003	Design, supply, construction and commissioning of 3.46km long 33 kV DC distribution line
BAT, New Cigarette Factory Ibadan	BAT / Energoprojekt Oprema	20,000,000	2003	MEP services – procurement, installation of electrical and mechanical systems, plumbing and automation
Distribution Line 33 kV DC line, Lekki – Victoria Island, Lagos	NEPA	460,000	2003	Design, supply, construction & commissioning of 33kV DC distribution line - 2 km
Reinforcement of SS „Papalanto“ 132/33kV	NEPA	370,000	2002	Reinforcement of 132/33kV substation at Papalanto
Distribution Line, 33 kV Garkida-Biu-K. Kusar-Byriell, Borno state	NEPA	1,800,000	2002	Construction of 142 km of 33 kV rural electrification lines
Substation „Otta“, 2x45MVA, 132/33/11kV, Ogun State	NEPA	1,620,000	2001	Refurbishment of SS 2x45 MVA 132/33/11kV
Substation „Alausa“, 2x45MVA, 132/33/11kV, Lagos State	NEPA	1,980,000	2001	Refurbishment of SS 2x45 MVA 132/33 /11kV
Transmission Line, 330kV SC, Aliade - Makurdi	NEPA	6,400,000	2001	Construction of 46km, 330kV SC transmission line
Mobile Station , 30 MVA, 132/33kV, Makurdi	NEPA	1,980,000	2001	Turn Key project – Design, procurement, erection and commissioning of mobile station 30MVA, 132/33kV
Micro Wave Antenna towers at Abia, Zamfara & Gombe	NITEL/Siemens	500,000	2000	Dismantling and re-erection of 4 towers (2x120m, 85m & 50m)
Distribution line, 33kV DC, Aja Lekki - Lagos	NEPA	5,700,000	2000	Turn Key project – procurement and construction of 20 km, 33kV DC distribution line
Antenna towers on Kuta-Shiroko	NITEL/Siemens	93,000	1999	Erection of 3 towers
Repeater Stations, Kano-Kaduna	NITEL/Siemens	311,765	1999	Control Building Civil Works - 6 stations
Distribution line, 33kV DC, Amuwo-Satellite, Lagos	NEPA	120,000	1999	Construction of 33 kV D/C distribution line
Benin-Delta 330 kV TL rehabilitation	NEPA	328,000	1999	Re-erection of 11 collapsed towers of 132kV line
Distribution line Apir – Makurdi, 33kV, Benue State	NEPA	1,440,000	1999	Turn Key project –construction of 15km, 33kV DC distribution line
SS „Apir“, 1x15MVA, 132/33 kV, Makurdi, Benue state,	NEPA	1,980,000	1999	Turn Key project –construction of SS 132/33 kV, 1x15MVA
Substation „Ilesha“, 2x40MVA, 132/33kV, Osun State	NEPA	2,170,000	1998	Turn Key Project –Design, procurement, erection and commissioning of SS 2x40MVA, 132/33kV Ilesha
Access to hangars at Kaduna Airport	Sky Power	360,000	1998	Construction of access area 7200m ² to hangars at Kaduna airport
33kV underground cable Oworonshoki-Ogudu, Lagos	NEPA	1,980,000	1998	Laying of 33kV DC underground cable

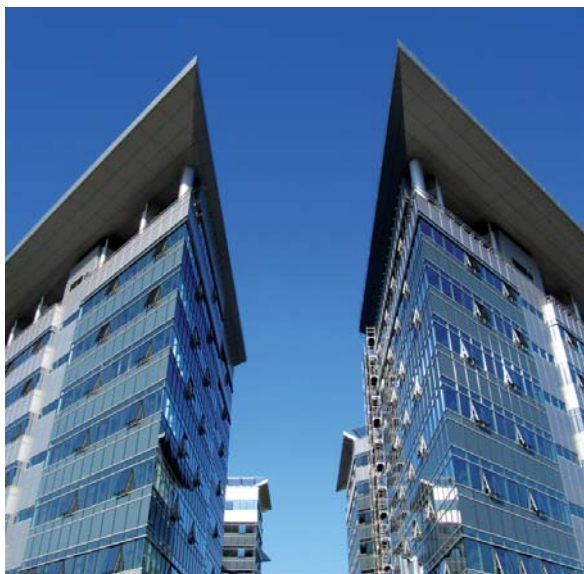
Projects	Client	Contract Value (USD)	Year of Completion	Project Description
Substation „Uyo“, 2x40MVA, 132/33kV, Akwa Ibom State	NEPA	7,260,000	1997	Turn Key project – Design, procurement, erection and commissioning of 2x40MVA , 132/33kV SG
National Water Rehabilitation Project, Plateau State	Plateau State Water Board	1,000,000	1997	Refurbishment and extension of water plants
Micro Wave Antennas Jos - Makurdi, Abuja-Kaduna-Bauchi	NITEL/Siemens	170,000	1997	Erection of 6 antennas, platforms & fastenings, re-erection of towers
Turning in and out of TL Itu-Eket at SS „Uyo“	NEPA	560,000	1997	Construction of turning in & out of 132kV TL Itu – Eket at 132/33kV SS „Uyo“
Power Supply to CNL Hospital and Recreation Center, Lagos	Chevron	370,000	1997	Construction of power supply to CHL hospital and recreation center
Staff housing at SNCC Shiroro dam	NEPA	1,250,000	1997	Construction of 18 bungalows, 52.000m ²
Repeater Stations Jos- Makurdi	NITEL/Siemens	1,762,000	1996	Control Building Civil Works - 9 stations
Repetitor station Jos - Makurdi				Refurbishment and erection of new towers with antennas 50-80m high on the digital microwave link - control building and 9 stations
Power supply system, Calabar				Diesel power generation plant
Repetitor stations Kaduna – Abuja, Jos – Makurdi, Akwa Ibom state				Supply, installation & maintenance of 29 solar panel / diesel generator stations
Distribution line 33 kV, Takum, Taraba state	Ministry of Power and Steel	740,000	1996	Construction of 25km 33 kV distribution line
Distribution line 33 kV, river crossing, Donga, Bauchi state				Construction of special towers for 33 kV distribution line river crossing
Distribution line 33 kV, river crossing, Tawafa Balewa, Bauchi state				Construction of special towers for 33 kV distribution line river crossing
Power supply to Nigerdock, Lagos	Nigerdock	1,800,000	1995	Construction of SS 33/11kV, 11kV underground cable and 11kV SG
Distribution line 33 kV, Micika-Gulag-Madalagi, Adamawa state	Ministry of Power and Steel	800,000	1994	Construction of 65km 33 kV distribution line
Distribution line 33 kV, river crossing, Shellig, Adamawa state	Ministry of Power and Steel	100,000	1994	Construction of special towers for 33 kV distribution line river crossing
Power supply to Nigerdock, Lagos	Nigerdock	1,700,000	1994	Construction of 33kV SC line from Amuwo to Snake Island and special lagoon crossing towers
Distribution line Oshogbo – Ibadan – reerection and restringing	NEPA	1,112,000	1994	Re-erection of 29 collapsed 33kV towers and restringing of 13km 33kV line
LDSE - Lagos Distribution System, 132kV DC TL and 33kV DC DL , Lagos State	NEPA	17,000,000	1992	Turn Key project –construction of 120km, 132kV DC transmission line and 40km of 33kV DC distribution line
Kano State Secretariat	Kano State Government	82,000,000	1988	Construction of State Government 's administrative complex with area of 40,000m ²
Transmission Line Alagbon – Ikeja, Lagos state	NEPA	18,000,000	1984	Construction of 132 kV DC transmission line
Kiri Dam, Yola Irrigation scheme	Federal Government	61,000,000	1984	Concrete Water Dam, lake and irrigation system covering 25,000 hectares
Kano river irrigation scheme	Federal Government	87,500,000	1983	Irrigation system covering 14,000 hectares
ASCON college	Federal Government	68,000,000	1983	Total complex area 5,000 m ²
Eye Hospital, Kaduna	Federal Government	118,500,000	1980	Total complex area 10,000 m ²
Housing settlement, Victoria Island, Lagos	Lagos State Government	9,760,000	1980	High standard condominium of 20 villas with appropriate infrastructure
Flyover interchange, Lagos	Federal Government	2,300,000	1978	Traffic roundabout on Badagry expressway
Countrywide electrification program	Federal Government	19,500,000	1977	Construction of 1,300km rural electrification lines
International Trade Fair, Lagos	Federal Government	223,000,000	1977	12 exhibition pavilions, total area 80,000m ²
Electrification of 85 towns	Federal Government	18,800,000	1975	Construction of 1,200km rural electrification lines

REFERENCES WORLDWIDE

POWER GENERATION, TRANSMISSION AND DISTRIBUTION

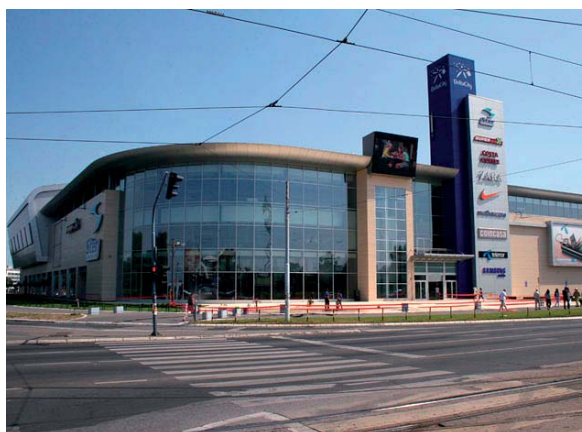
Project / Location	Client	Project Value (USD)	Year of Completion	Type of Work / Services
Construction of TL 2 x 400kV Pančevo 2 – Romanian border, Serbia	EMS - Serbian Transmission System and Market Operator	27,153,509	on going	Turn Key
Energy Centre, Minsk, Belarus	Gazprom Transgaz Belarus	41,712,000	on going	Turn Key
Reconstruction of railway station "Belgrade Center" – Phase I	Železnice Srbije a.d.	33,505,992	on going	Acquisition, Installation & Commissioning
Thermal Power Plant " Nikola Tesla" – Unit A3 reconstruction of electrostatic precipitator, Obrenovac, Serbia	EPS-Electrical Power Industry of Serbia / TPP Nikola Tesla	10,075,000	2015	Turn Key
Thermal Power Plant Kostolac B – Unit 2 rehabilitation with reconstruction of electrostatic precipitator, Serbia	EPS-Electrical Power Industry of Serbia / Thermal Power Plants and Mines Kostolac LLC	85,800,000	2013	PM, Design, Procurement, installation and commissioning
Thermal Power Plant New Belgrade, - exchanger station on highway no.6,Belgrade, Serbia	Public Utility Company "BEOGRADSKE ELEKTRANE"	6,704,230	2012	Acquisition, Installation & Commissioning
New energy supply system of Clinical Center of Niš, Serbia central boiler plant 1CHP (combined heat and power plant); 32 MW Total Capacity; 3 hot water boilers, district heating pump station; central steam boilers; central monitoring system CMS; 8 clinics indoor heating installations; 1,8km district heating pipeline; 18 sub-stations	Ministry of Health and Clinical Center Niš	5,700,000	2012	PM, Design, Procurement, installation and commissioning
Double circuit Transmission Line, 400 kV, 100 km, Leskovac 2 – Macedonian border, Serbia	Instalaciones Inabensa S.A. /EMS (Serbian transmission system and market operator)	8,907,688	2012	PM, Design, Construction
Installation of OPGW Cable with associated equipment on 400 kV, 220 kV, 110 kV and 35 kV Transmission Lines in Serbia	EPS – Electrical Power Industry of Serbia	9,750,000	2003-2012	Installed over 2000 km of OPGW cable (5 contracts)
Substation 110/35kV Beograd 1- extension and 2x110kV double cable line, SS Beograd 1 - SS Beograd 28 (3,1 km)	EMS - Serbian Transmission System and Market Operator /ABB - Sweden	6,990,000	2010	Turn key
Thermal Power Plant Kolubara A, Unit A5 – reconstruction of electrostatic precipitator and ash handling system, Serbia	EPS-Electrical Power Industry of Serbia / TPP Nikola Tesla	19,350,000	2009	Turn key
Double circuit Transmission Line, 400 kV, 40km, Nis – Leskovac, Serbia	EMS - Serbian Transmission System and Market Operator	8,972,420	2009	Turn key
New energy supply system of Clinical Center of Serbia - Lot 1 – central boiler plant 1CHP combined heat and power plant 1,8MW _e & 1,8MW _t , 3 hot water boilers 40MW, district heating pump station, central steam boilers 6t/h, central monitoring system CMS, Belgrade, Serbia	Ministry of Health and Clinical Centre of Serbia	10,300,000	2008	PM, Design, supply, construction and maintenance
Thermal Power Plant Nikola Tesla, Unit A4 (308,5 MW) – reconstruction of electrostatic precipitator, Serbia	EPS-Electrical Power Industry of Serbia / TPP Nikola Tesla	9,822,488	2007	Turn key
Thermal Power Plant Nikola Tesla, Unit A1 (210 MW) - adaptation and rehabilitation of electrostatic precipitator, Serbia	EPS-Electrical Power Industry of Serbia / TPP Nikola Tesla	7,450,000	2006	Turn key
Reconstruction and upgrade of 20 kV distribution network in Ireland (North-east area)	ESB, Laing O'Rourke Waterland	14,880,000	2006	Construction





PUBLIC BUILDINGS

Project / Location	Client	Project Value (USD)	Year of Completion	Type of Work / Services
Administrative building – Block 26, New Belgrade, Serbia	Blue Centere d.o.o.	15,243,142	2009	Procurement, installation of electrical and mechanical systems, plumbing and automation
Complex Belville - University village, New Belgrade, Serbia	Montera/ Blok 67 Associates d.o.o.	14,400,000	2009	Procurement, installation of electrical and mechanical systems, plumbing and automation and TS 10/0,4kV
Shopping Mall, "Delta City", Block 67, Belgrade, Serbia	Delta Holding Co	18,172,534	2007	Mechanical (sanitary and HVAC) and local automatization works
Main Railway Station "Belgrade Centar", Belgrade, Phase I, Serbia	BZC, City of Belgrade	20,000,000	2001	Mechanical, Electrical & Plumbing Works
"ETISALAT" Telecommunication and Administration Building Ajman, U.A.E.	ETISALAT, U.A.E.	15,000,000	2001	Mechanical, Electrical & Plumbing Works
"Mazaya Center" Commercial and Residential Building Dubai, U.A.E.	HH Sheikha Alia Al Maktum, Dubai, U.A.E.	12,000,000	2000	Mechanical, Electrical & Plumbing Works
Three Hospitals - Mandeville, St Ann's Bay and Kingston, Jamaica	Rizzani de Eccher S.p.A.	10,000,000	2000	Mechanical, Electrical & Plumbing Works
Bank Association Financial Center of Uzbekistan, Tashkent, Uzbekistan	Association of Uzbekistan Banks	4,200,000	2000	Mechanical & Electrical Works
Surgutneftegaz Bank, Surgut, Russian Federation	Surgutneftegazbank, Surgut	4,350,000	2000	Mechanical, Electrical & Plumbing Works





INDUSTRIAL PROJECTS AND PLANTS

Project / Location	Client	Project Value (USD)	Year of Completion	Type of Work / Services
Construction of new Flash Smelter Plant at RTB Bor, Bor, Serbia	OUTOTEC	34,826,400	2015	Project Management, Design, procurement and execution of electrical and mechanical works
Construction of new Sulphuric Acid Plant at RTB Bor, Bor, Serbia	SNC LAVALIN, Canada	39,400,000	2015	Project Management, Construction works, partial delivery of the equipment and materials, complete erection of the mechanical and electrical equipment and installations
Pharmaceutical Factory, Tyumen, Russian Federation	Tyumen Administration, Russia	25,000,000	2005	Project Management, Design & Build Civil works, MEP & Utilities



POTABLE WATER TREATMENT PLANTS

Project / Location	Client	Project Value (USD)	Year of Completion	Type of Work / Services
Potable water Treatment Plant „Bežanijska kosa“, Reconstruction of filtering plant, Belgrade, Serbia	Public Utility Enterprise Belgrade water and sewerage	1,495,100	2006	Procurement and Construction of MEP and civil works
7km of potable water distribution piping system – ductile iron pipe material, Kraljevo, Serbia	Enterprise for planning and construction of the city of Kraljevo	2,600,000	2005	Turn Key
"Gorina", Leskovac, Raw Water Pipeline, of Potable Water Treatment Plant, Q=3000 m ³ /h, Serbia	Public Utility, Enterprise - Leskovac	2,700,000	2001	Design and Installation



MUNICIPAL WASTEWATER TREATMENT PLANTS

Project / Location	Client	Project Value (USD)	Year of Completion	Type of Work / Services
Valjevo, Q=1,260 m ³ /h; Reconstruction & upgrading Serbia	Public Utility Enterprise Valjevo	2,500,000	2002/2004	All Works
Kovin, (I phase), Q=360 m ³ /h, PE 20,000, Serbia	Municipality of Kovin	1,800,000	2002	Design and Build
Jagodina, I Phase, Q=2,000 m ³ /h; PE 89,000, Serbia	Municipality of Jagodina	8,900,000	2000	Design and Build

KEY PROJECTS

POWER PROJECTS - SUBSTATION PROJECTS

SUBSTATION OKE ARO (ERUKAN)

Client: Federal Ministry of Power and Steel & NDPHC/NIPP
 Location: Lagos, Lagos state, Nigeria
 Project status: Completed 2013

Project characteristics

Design, procurement, construction & commissioning of substation, 2x300 MVA 330/132kV, 1 1/5 CBS per bay, 3 OHL diameter, 1 trafo-diameter, 2x300 MVA autotransformers, 330/132/33.5 kV and 1x75 MVA, 330 kV shunt reactor; 2x60 MVA 132/33 kV, 1 1/5 CBS per bay, 5 OHL diameter, 2 trafo-diameter, 2x60 MVA power transformer 132/33.5 kV and 6x33 kV OHL Bays.



SUBSTATION „CENTRAL AREA“ (GIS)

Client: Nigerian Electricity Power Authority (NEPA)
 Location: Abuja, Nigeria
 Project status: Completed 2004

Project characteristics

Design, procurement, construction & commissioning of GIS substation, 132/33kV, 2x60 MVA. The construction of residential houses for operational and maintenance staff is also a part of this project.

SUBSTATION „KATAMPE“

Client: Nigerian Electricity Power Authority (NEPA)
 Location: Abuja, Nigeria
 Project status: Completed 2003

Project characteristics

Design, procurement, construction & commissioning of substation, 330/132/33kV, 2x150 MVA, 2x60 MVA and connection to the new 330kV and existing 132 kV SC transmission lines. The construction of residential houses for operational and maintenance staff is also a part of this project.



POWER PROJECTS - POWER TRANSMISSION AND DISTRIBUTION

TRANSMISSION LINE ERUKAN – OMOTOSHO

Client: Transmission Company of Nigeria (TCN)
 Location: Erukan – Omotosho, Nigeria
 Project status: On going

Project characteristics

Turn key project – Design, supply, construction & commissioning of 330kV DC Over Head Transmission Line – 160km

TRANSMISSION LINE KATAMPE -NATIONAL STADIUM, ABUJA

Client: Power Holding Company of Nigerian (PHCN)
 Location: Abuja, Nigeria
 Project status: Completed 2015

Project characteristics

Turn key project – Design, supply, construction & commissioning of 132kV DC combine Cable/OHTL connection - 12 km

STREET LIGHTING – DUALIZATION OF ABUJA – GWAGWALADA HIGHWAY

Client: Julius Berger PLC /Federal Capital
 Development Authority (FCDA)
 Location: Abuja – Gwagwalada Highway, Nigeria
 Project status: Completed 2013

Project characteristics

33kv /0.415kv compact substations, underground cables and street lighting along 44km airport road Abuja - Gwagwalada

SUBSTATION UGWUAJI – SWITCHYARD + EXTENTION

Client: Federal Ministry of Power and Steel & NDPHC/NIPP
 Location: Ugwuaji, Enugu State, Nigeria
 Project status: Completed 2014/2015

Project characteristics

Design, procurement, construction & commissioning of 330 kV substation switchgear yard; design, procurement, construction and commissioning of transformer substation 330/132/33kV, 1 x 150 MVA, 1 x 60MVA and design, procurement, construction & commissioning of DC 330kV transmission line between Ugwuaji and New Haven substation, Enugu. The construction of residential houses for operational and maintenance staff is also a part of this project.

LEKKI - IKOYI BRIDGE, LAGOS

Client: Bilfinger Berger AG Nigeria Division & Julius Berger Nigeria PLC
 Location: Lagos, Nigeria
 Project status: Completed 2013

Scope of Works: ELECTRICAL WORKS, PROCUREMENT and DELIVERY (CPT Bremen), INSTALLATION, TESTING and COMMISSIONING

Systems: ELECTRICAL (Street Lighting, Toll Station, Pylon - Obstruction Lighting and Decorative Illumination)



TRANSMISSION LINE JOS – KAFANCHAN

Client: Power Holding Company of Nigerian (PHCN)
 Location: Plateau and Kaduna States, Nigeria
 Project status: Completed 2012

Project characteristics

The project consists of construction of DC 132 kV Transmission Line, 80km long, conductor type - twin bundle ACSR “BEAR”, steel lattice towers, average span 200m. from Jos to Kafanchan.

REHABILITATION OF 132kV DC TRANSMISSION LINE KADUNA-ZARIA

Client: Power Holding Company of Nigerian (PHCN)
 Location: Kaduna-Zaria, Nigeria
 Project status: Completed 2011

Project characteristics

Rehabilitation of 80 km 132kV transmission line. First instalment of T-ACSR conductor in Nigeria.

PORT HARCOURT ELME JUNCTION – STREET LIGHTING

Client: Bilfinger Berger AG Nigeria Division & Julius Berger Nigeria PLC
 Location: Lagos, Nigeria
 Project status: Completed 2011

Scope of Works: ELECTRICAL WORKS, PROCUREMENT and DELIVERY (FOB Bremen), INSTALLATION, TESTING and COMMISSIONING

Systems: Street Lighting System and associated accessories (109 Poles), including 1 No. Transformers 500 kV



TRANSMISSION LINE 132 kV, D/C, 26KM, AFAM – PORT HARCOURT

Client: Taleveras Group / Saipem / Rivers State Government
 Location: Afam – Eleme (Port Harcourt), Nigeria
 Project status: Completed 2011

Project characteristics

Turn key project –Design, supply, construction & commissioning of 132kV DC Over Head Transmission Line

TRANSMISSION LINE EGBIN – BENIN / EGBIN IKEJA WEST & SUBSTATION EGBIN EXTENTION

Client: Power Holding Company of Nigeria (PHCN)
 Location: Lagos State, Nigeria
 Project status: Completed 2009

Project characteristics

Design, procurement, construction & commissioning of 330kV DC transmission line, 28km long, conductor type – twin bundle ACSR “BISON”, steel lattice towers, average span 400m.

Design, procurement, construction & commissioning of 2 additional line bays in 330/132kV substation at Egbin.



TRANSMISSION LINE ENUGU – IKOT EKPENE

Client: Federal Ministry of Power and Steel & NDPHC/NIPP
 Location: Enugu and Akwa Ibom States, Nigeria
 Project status: Completed 2015

Project characteristics

The project consists of construction of two DC 330 kV transmission lines, 2x180km long, conductor type - twin bundle ACSR “BISON”, steel lattice towers, average span 400m. from Enugu to Ikot Ekpene.

The project includes, also, a construction of 330 kV SG in New Haven, south Enugu, Nigeria.



DISTRIBUTION LINE SS APO– ABUJA INTERNATIONAL AIRPORT

Client: Federal Ministry of Power and Steel & NDPHC/NIPP
 Location: Abuja State, Nigeria
 Project status: Completed 2008

Project characteristics

The project consists of construction of 33kV DC distribution line, 44km long, conductor type - ACSR 240/40 "BEAR", steel lattice towers and steel poles, average span 120m. from substation Apo to Abuja International / Domestic airport.

TRANSMISSION LINE SHIRORO–ABUJA

Client: Nigerian Electricity Power Authority (NEPA) / ABB
 Location: Abuja State, Nigeria
 Project status: Completed 2005

Project characteristics

Construction of 330kV DC transmission line, 144 km long, conductor type – twin bundle ACSR "BISON", steel lattice towers, average span 400m.

TRANSMISSION LINE ALIADE –MAKURDI

Client: Nigerian Electricity Power Authority (NEPA)
 Location: Benue State, Nigeria
 Project status: Completed 2001

Project characteristics

330kV SC transmission line, 46km long, conductors type ACSR "Bison" 350 mm² two per phase, earth–wire conductor GSW 2x140mm², steel lattice self supported structure, average span 400m.



DISTRIBUTION LINE AJA–LEKKI

Client: NEPA
 Location: Lagos State, Nigeria
 Project status: Completed 2000

Project characteristics

Energy executed on the Turn–Key basis, the construction of the distribution line with the following characteristics:

33kV DC distribution line, 20km long, conductor type – ACSR “Bear”, steel lattice towers and steel poles, average span 100m.

LDSE -LAGOS DISTRIBUTION SYSTEM

Client: NEPA
 Location: Lagos State, Nigeria
 Project status: Completed 1992

Project characteristics

The project LDSE represents one of the most sophisticated expansion project of the network at different voltage levels. As such it takes an outstanding place among the ones executed by Energo in the past.

132kV DC transmission line–99km, and 33kV DC distribution line– 50km, 23 lines spreading through the city of Lagos area and its outskirts, 488 steel lattice towers for 132kV and 516 tubular steel poles for 132kV and 33kV. Phase conductors–ACSR “Bear”, protection cable steel 58mm², glass cap insulators and long porcelain insulators with safety clamps.

TELECOMMUNICATION AND GSM PROJECTS

EXTENSION OF SCADA SIGNALS AT KATAMPE SUBSTATION

Client: Nigerian Electricity Power Authority (NEPA)
 Location: "Tarkwa" Island – Lagos, Nigeria
 Project status: Completed 2007

Project characteristics

Turn key project - Extension of SCADA signals from the switchyard to the control rooms at Katampe 132/33 kV substation



GSM REPETITOR STATIONS

Client: GLOBALCOM / SIEMENS
 Location: Kaduna, Jos, Bauchi, Nigeria
 Project status: Completed 2005

Project characteristics

Project consisted of civil works (foundation, station...) and erection of new towers with antennas of 40 – 90m high on digital microwave link.

GSM REPETITOR STATIONS

Client: NITEL/SIEMENS, NEPA/SIEMENS
 Location: Jos-Makurdi, Kaduna-Kano, Abuja-Kaduna-Bauchi, Kuta-Shiroro, Nigeria
 Project status: Completed 1999

Project characteristics

Project consisted of refurbishment and erection of new towers with antennas 50-80m high on the digital microwave link. In order to upgrade, modernize and digitalize the existing power supply of telecommunication network with solar panels, Energo, as a subcontractor of Nitel/Siemens, has performed: design, civil works on control buildings, supply and maintenance on refurbishment of the existing exchange network, erection installation and erection of new towers with antennas and solar panels on digital microwave links.

NEPA POWER SUPPLY TO CLN.I HOSPITAL/RECREATION CENTER

Client: CHEVRON NIGERIA Ltd
 Location: Oworonshoki/Gbagada, Lagos Nigeria
 Project status: Completed 1999

Project characteristics

Project consisted of laying of 33kV underground cable network (cable type 3x150mm² XLPE/SWA/PVC) between NEPA's 132/33kV substation at Oworonshoki and 33/11kV, 2MVA substation at CLN's at Agbada Hospital/Recreation Center at Agbada as well as all civil, electrical and mechanical works on the SS. The works were executed in the swampy area.

MEP - BUILDING SERVICES PROJECTS

NATIONAL INSTITUTE FOR LEGISLATIVE STUDIES, ABUJA

Client: Bilfinger Berger AG Nigeria Division
& Julius Berger Nigeria PLC
Location: Abuja, Nigeria
Project status: On going

Scope of Works: MEP – MECHANICAL, PLUMBING & ELECTRICAL WORKS, DESIGN and ENGINEERING SERVICES

Buildings: Convention Centre, Library, Admin. Building, Lecture Theatre, Main Reception, Junior Staff Quarters, Clinic, Power House, Maintenance Building, Main Gate, Chiller Plant (~64,650 m²)



ABUJA NATIONAL ASSEMBLY RESIDENCES, ABUJA

Client: Bilfinger Berger AG Nigeria Division
& Julius Berger Nigeria PLC
Location: Abuja, Nigeria
Project status: On going

Scope of Works: MEP – MECHANICAL, PLUMBING & ELECTRICAL WORKS, DESIGN and ENGINEERING SERVICES

Buildings: Compound Senate President, Compound Speaker of the House (HoR), Compound Deputy Senate President, Compound Deputy Speaker of the House (HoR), General Area / Infrastructure (~ 14,300 m²)

UYO STADIUM

Client: Bilfinger Berger AG Nigeria Division & Julius Berger Nigeria PLC
 Location: Uyo, Nigeria
 Project status: Completed 2014

Scope of Works: MEP – MECHANICAL, PLUMBING & ELECTRICAL WORKS, PROCUREMENT and DELIVERY (FOS Uyo), INSTALLATION, TESTING and COMMISSIONING

Buildings: Main Stadium incl. Ticket Booth, Infrastructure, Generator House, Sewage Treatment Plant, Water Reservoir, Workshop, Diesel Gen sets / Switchgear, Gate House I & II, Training Pitch (~ 64,700 m²)

Systems:

HVAC & CONTROL SYSTEM (CHW System with Fresh Air Supply, DX Units System, Ventilation, MCC)

SANITARY & FF (Sewerage System, Storm Water Drainage, Water Supply – Hot & Cold, FF Extinguisher)

MECHANICAL (Diesel Oil Supply System)

ELECTRICAL LV (3x Gen-Sets 1500 kVA+1x Gen-Sets 800 kVA, UPS, Power supply cables and SDBs, Internal lighting system, Sports lighting, Decorative Luminaries, Dimming system, Earthing & Lightning)

ELV SYSTEM (PABX, Public Address, Clock System, Audio-Video System, Multimedia, CATV, Fire alarm, CCTV)

ELECTRICAL INFRASTRUCTURE (4x 11kV substations (switchgear and transformers), 4 x Main switch gears (MDB) 0,415kV, Street lighting, Decorative luminaries, Fire Alarm, CCTV cabling, Fiber optic cabling)

PLUMBING INFRASTRUCTURE (Fire Fighting System, Irrigation System and Potable Water Supply System, WTP, Pump Stations – FF & Potable & Irrigation, STP)



EMBASSY OF THE REPUBLIC OF SERBIA, ABUJA, NIGERIA

Client: Ministry of Foreign Affairs of the Republic of Serbia, Belgrade, Serbia
 Location: Abuja, Nigeria
 Project status: Completed 2015

Project characteristics:

New complex of the Embassy of the Republic of Serbia includes embassy building, the ambassador's residence building and housing units for DK staff, all GF + 1, as well as gate house, fence, diesel generators, water and fuel tanks, etc.

Complex Area: 5,506 m² Buildings Area: 1,600 m²

ARCHITECTURAL & CIVIL WORKS

Civil works/building structures, insulation, roof structure with a roof cladding, facades, floors, walls and ceilings coverings, windows, partitions, interior and exterior doors, vehicle/pedestrian gates and built-in furniture.

TRAFFIC AND LANDSCAPING:

Roads and pavements in the complex, parking lots, drainage channels for drainage of the plateau, the greening of the complex.

ELECTRICAL SYSTEMS:

Two diesel generators (DG) for backup power-day and night work, with an underground tank for diesel fuel, electric cables, installation of external/internal lighting, lightning conductor and grounding - electricity supply from existing power station.

AUTOMATIC CONTROL SYSTEMS:

Automatic refueling system for DGs, automatic refilling of the roof water tanks, local control for AHU and VRF systems

TELECOMMUNICATION & SECURITY SYSTEMS:

Structural network (integrated telephone and data network with passive and active components), telephone exchange (business PBX) with integrated intercom system, distribution of TV satellite and terrestrial signals (SMATV), fire alarm system (detection and alarm), access control/intrusion alarm system, video surveillance (CCTV), electric fence to protect the perimeter.

HVAC:

For each of the three main buildings separately-VRF cooling system with wall/ channel units and AHU with air ducts for fresh air supply (linear/square diffusers, grilles according to the interior design requirements) and exhaust fan for sanitary facilities ventilation.

HYDRO TECHNICAL SYSTEMS (W&S&D):

Well, underground water tank, roof tanks with a network pressure raising system and central hot water preparation for each building separately, fire protection systems, irrigation, internal and external water supply, sewerage and drainage networks, bathroom fixtures and accessories.



UYO'S GOVERNMENT COMPLEX

Client: Bilfinger Berger, Germany & Julius Berger Nigeria PLC
Location: Uyo, Nigeria

PHASE III – Government Offices

Project status: Completed 2013

PHASE II – Guest house with Gate Houses and Banquet Hall

Project status: 2011

PHASE I – Governors Lodge

Project status: 2009

Project characteristics

The Project includes preparation of detailed and as build design, procurement of all the equipment and materials, construction, commissioning, training of client's personnel and other post-construction services for the high and low voltage systems, HVAC systems, and mechanical (potable and waste water, drainage and fire-fitting) systems.

HVAC: Central A/C system consists of 6 air-cooled chillers for CHW, supply for 11 AHU's, CHW pump station, Fan coil units system and DX Split Units system.

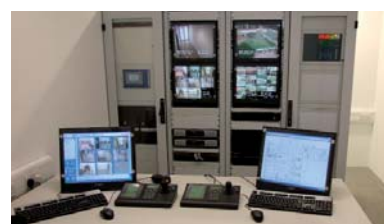
Fire Protection: Fire Hydrant System and Argon Gas Extinguishing Systems.

Plumbing: Water Supply, Sewerage System, Drainage

Electrical: Power supply, HV Equipment, LV Equipment, Power Installation, Lighting, Lightning and Earthing Protection, MCC&MCP

Telecommunication: Telephony System, Data Network, Fire Detection, Burglar Alarm, Access Control, Cable TV, CCTV, Multimedia presentation, Public Address and Voice Alarm System.

BMS & EMCS: Building Management System, Electrical Monitoring & Control System



NATIONAL ASSEMBLY COMPLEX, ABUJA, NIGERIA

Client: Bilfinger Berger, Germany & Julius Berger Nigeria PLC
 Location: Abuja, Nigeria

Phase III, Part 2 - Extension Senate Block and House of Representative

Project status: Completed 2011

Phase III, Part 1 - House of Senate and House of Representative

Project status: Completed 2007

Project characteristics

The project consists of M&P (mechanical and plumbing) and fire protection systems' services – including equipment procurement, installation and putting into operation. Area 75,000m².

HVAC: Central A/C system consists of 6 air-cooled chillers for CHW, supply for 11 AHU's, CHW pump station, Fan coil units system and DX Split Units system.

Fire Protection: Fire Hydrant System and Argon Gas Extinguishing Systems.

Plumbing: Water Supply, Sewerage System, Drainage.

MCC (Motor Control Centers) including protection and control for all HVAC and Fired protection systems.



BAT CIGARETTE FACTORY IBADAN

Client: BAT - British American Tobacco
 Location: Ibadan, Nigeria
 Project status: Completed 2003

Project characteristics

Cigarette Factory Project done for British American Tobacco, one of the World leading Companies in Tobacco Industry. Area 22000 m².

The Project consists of highest standard special customized MEP systems for this type of industrial buildings and includes detailed design, procurement, installation, testing and commissioning, training, as built documentation, operation & maintenance manuals, defect liability period.

HVAC:

Central A/C systems with 3 chillers with screw compressors, Air Handling Units, DX package Units, Fan Coil Units, Ventilation.

Fire Protection:

Sprinkler, Hydrant, Standpipe, Hose reels, Inergen (IG100), Foam Deluge.

Plumbing:

Water Treatment Plant, Water Supply, Waste Water Treatment Plant, Sewerage System, Drainage, Irrigation System.

Technology installations:

Steam plant, Liquid Petroleum Gas Plant, Vacuum Plant, Compressed Air Plant, Fuel Oil Supply Plant, Fuel oil Supply Yard.

Telecommunication:

Telephony System, Data Network, Fire Detection, Burglar Alarm, Access Control, CCTV, Public Address and Voice Alarm System.

Electrical:

HV Equipment, LV Equipment, Power Installation, Lighting, Lightning and Earthing.

Protection, MCC&MCP

BMS&EMCS:

Building Management System, Electrical Monitoring & Control System.



BUILDING CONSTRUCTION PROJECTS

TWIN LAKES REAL ESTATE DEVELOPMENT PHASE 1A

Client: Bilfinger Berger AG Nigeria Division & Julius Berger Nigeria PLC
 Location: Lagos, Nigeria
 Project status: Completed 2012

Project characteristics

Scope of Works:

MEP – MECHANICAL, PLUMBING & ELECTRICAL WORKS DESIGN, PROCUREMENT and DELIVERY (CPT Bremen), INSTALLATION, TESTING & COMMISSIONING

Phase I Buildings:

Telecom Building, Power Plant Building, Gate Houses 1 & 2, WTP, STP, Infrastructure (~ 2,500 m²)

Systems:

33/11 kV 15 MVA Transformer Substation, 11kV Panel Indoor, 11KV & 0.415 kV Outdoor Equipment – RMU and Packaged Substation, SDBs, Outdoor Lighting, Lighting Kiosk, 4 x 11kV Gen-Sets 2250 kVA, Control Panel, Packaged Substation, UPS, Power supply cables and SDBs, Internal lighting system, Earthing & Lightning protection, ELV SYSTEM-Voice and Data, Fire alarm, CCTV, Diesel Oil Supply System, CHW System with Fresh Air Supply, Down Flow Close Control Unit, Package Condensing Unit, Ventilation, MCC, Sewerage System, Storm Water Drainage, Water Supply – Hot & Cold, FIRE FIGHTING-Sprinkler – Deluge System, Hose Reel, FM 200, Portable Fire Fighting Extinguisher

PRIVATE VILLAS & COMPOUNDS

Client: Private
 Location: Abuja and Lagos, Nigeria
 Project status: Completed 2002/2004/ 2007

Project characteristics

Projects on Turn-key basis included design, material and equipment procurement, civil, electrical, mechanical and plumbing works, of several private villas and compounds.

Area of the executed projects varied from a few hundred to a few thousand square meters. Interior design was also designed and performed by our specialists in collaboration with local subcontractors.

NATIONAL WATER REHABILITATION PROJECT

Client: Plateau State Water Board
 Location: Plateau State – Jos, Laminga, Yakubu Gowon, Bukuru
 Projects status: Completed 1997

Project characteristics:

Treatment Plant: Laminga – Jos 20l/sec, Lafi a, Yakubu Gowon 800l/sec, Bukuru raw water pumps – motor capacity 34KW, 1470 RPM, 56m/head.

Within the National Rehabilitation Project of Plateau State we performed Supply and installation of water pumps, 450 kVA generator, hydrochloride system and chlorination unit, overhaul and repair of two 530kVA Darman generators. Rehabilitation of some water supply systems in the State, including supply of water tanker, workshop equipment, jib crane, mobile laboratory kit and spare parts for the various mechanical and electrical systems.

Head Office

Lagos

269B Kofo Abayomi Street , Victoria Island

P.O. Box: 70223,

Lagos, Nigeria

Tel: +234 (0)1 271 4167

Tel/Fax: +234 (0)1 271 4168

Abuja

138, Aminu Kano Crescent,

Wuse II, FCT Abuja, Nigeria

Tel.: +234 (0)9 461 1362

+234 (0)9 461 1363

Fax: +234 (0)9 461 1364

Representative Offices

Nigeria – Enugu, Calabar, Kaduna, Uyo

Serbia – Belgrade

United Kingdom – London

Germany – Frankfurt

Ghana – Accra

Rwanda – Kigali

Zambia – Lusaka

office@energonigeria.com

www.energonigeria.com